

SAGEM MO300E / XS300E

Linux powered EDGE M2M modules

Never before was so much
freedom given to intelligence



FREEDOM OF SPEECH
FOR SMART MACHINES



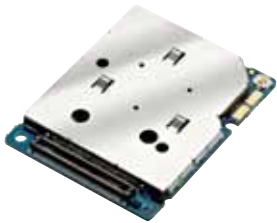


SAGEM MO300E / XS300E

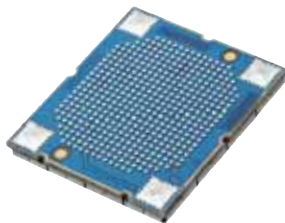
Linux powered EDGE M2M modules

GSM, GPRS, EDGE Class 10
Full Quad band 850/900/1800/1900 MHz
Very small form factor
Low power consumption (< 2mA in Idle mode)
Digital Audio interface
Complete embedded Internet connectivity
Ruggedized design for automotive & industrial applications
Ultra high connectivity, USB, 2 Uarts μ Wire, SPI, DAI....
LINUX powered Open Platform

Available in 2 form-factors:



MO300E: connector-type



XS300E: BGA package

SAGEM introduces its new Linux powered EDGE family for all your M2M applications: smaller, faster and with a capacity to embed even the most complex applications in their unique Linux OS, SAGEM MO300E & XS300E bring new possibilities to your developments!

Moreover, by choosing SAGEM, you decide to choose:

- A world class manufacturer who controls its own production capacity
- A technology validated and approved worldwide
- A top of the range technical support
- The highest standards of quality

Also available and compatible with MO300E / XS300E:

MO300 / XS300: all MO300 / XS300 features without the Linux OS.

TECHNICAL FEATURES

ENVIRONMENT

- 80 Pins Industrial approved Connector
- Size (LxWxH,mm) : 43 x 34 x 3.5 mm
- Operational Temperature range: -30°C / +75 °C
- Power supply DC voltage (min / max / nominal): 3.3 V / 4.5 V / 3.8 V
- Antenna Connection & Detection through RF connector or Antenna pad
- Full Type Approved: R&TTE, GCF, PTCRB, FCC, Rohs Compliancy
- Consumption in Standby mode (can receive a call): < 2 mA
- Consumption in off mode: < 50 uA
- Autonomous sleep mode management by Hardware or Software
- Enhanced mechanical integration for ruggedised environment
- Temperature Sensor (for MO300E)
- Possibility to mount sim card holder on the back (for MO300E)

OPEN PLATFORM

- Linux Based open platform
- Kernel 2.6 release available.
- 4 MB Flash for Customer applications
- 512KB of Ram for customer applications
- 80 Mips power processor for customer applications
- MCS1, μ Wire, SPI, PWN, I/O available through Linux OS.
- Application Firmware upgrade over the Air.

RADIO LINK

- Full Quad Band: EGSM 850, 900, 1800, 1900
- Output Power: Class 4 (2W) for 850 / 900 Mhz ; Class 1 (1W) for 1800 / 1900 Mhz
- EDGE/ GPRS Multislot Class: class 10 (3+2 & 4+1)
- EDGE baudrates: DL up to 236.8 kbps, UL up to 118.4 kbps
- GPRS baudrates: DL up to 85,6 kbps, UL up to 42,8 kbps
- EDGE Coding Scheme: MCS1 to MCS9
- GPRS Coding Scheme: CS1 to CS 4
- Mobile Station Class B

DATA INTERFACES

- 1 USB 2 Full speed and 2 serial Interfaces
- Full Hardware and Software Flow Control

- AT commands set : GSM 07.05; 07.07; Proprietary AT commands
- Multiplexing 07.10 serial interface
- Data over CSD 9,6 kbps
- Complete internet connectivity embedded: TCP, FTP, UDP, SMTP, POP3...
- 12 generals I/O

AUDIO INTERFACE

- Voice codecs: HR, EFR, FR, AMR
- 2 Differential analog audio interfaces
- Echo Cancellation & Noise reduction
- 1 Digital audio interface
- Dedicated audio channels (handset, headset, car kit, hands-free)

GSM FEATURES

- Automatic hang up for Data call
- Internal Phonebook
- CLIP / CLIR / COLP / COLR
- Call wait / call hold, Conference call
- Call forwarding, Call Barring
- Supports of: FDN, USSD, Sim Toolkit, AoC
- Module reset/alarm based on RTC

MESSAGING

- PDU and Text mode SMS support
- Voicemail indicator (CPHS)

LOCALIZATION

- SMS CB, Cell ID
- Network cells measurements

SECURITY

- Sim lock supported
- Device lock possibility
- Dedicated TAC for Customization purpose
- Sim 3V & 1.8 V supported

DEVELOPMENT AND SUPPORT TOOLS

- Extensive Documentations: HW Specs, Application Note, AT command
- List, pedagogical documentations
- Development board
- SDK (Software Development Kit)
- Evaluation software tools (TCP-IP, ...)
- Audio settings tool
- Upgrade tools
- Design, Certification & production support

All rights reserved. The information and specifications included are subject to change without prior notice. Sagem Communications tries to ensure that all information in this document is correct, but does not accept liability for error or omission. Non contractual document. All trademarks are registered by their respective owners. Limited company - Capital 167.038.185 Euro - 440 294 510 RCS Paris - SAGEM is a registered brand from Safran Group. 01/2008

Sagem Communications
Systems & Partnerships Business Unit
Radio & Professional Terminal Department

Headquarters: Le Ponant de Paris
27, rue Leblanc - 75015 Paris - FRANCE
Tel: +33 1 53 23 18 16 - Fax: +33 1 58 12 42 95

www.sagem.com

